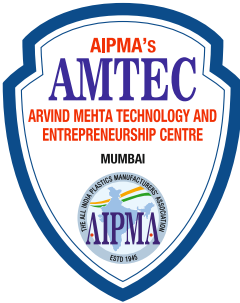


**SPEED**  
TO MARKET 



[www.amtecedu.org](http://www.amtecedu.org)



# AIPMA's AMTEC TESTING LAB

KNOWLEDGE PARTNER



**PLASTIVISION**  
INDIA | 2023 | MUMBAI  
DEC 07 08 09 10 11  
[www.plastivision.org](http://www.plastivision.org)

# ABOUT AMTEC

## AIPMA's AMTEC - ARVIND MEHTA TECHNOLOGY AND ENTREPRENEURSHIP CENTRE, MUMBAI

AIPMA with a goal to bring best practices and new improved technology to Manufacturing Industry has launched AIPMA's AMTEC - Arvind Mehta Technology & Entrepreneurship Centre (AMTEC). The setting up of the 'Centre of Excellence for Plastics Product Innovation and Application' with a vision to promote high quality knowledge and industrial services for rapid growth of the plastics and its application industry. The Centre of Excellence would help the MSME's in reducing overall time to design, develop and rapid roll out of products thereby increasing speed to global market. The Centre would help the industry to graduate from Micro to Small, Small to Medium and Medium to Large Enterprises in increasing its global market share in the next 3 years.

# ABOUT INTERTEK

Intertek is a leading Total Quality Assurance (TQA) provider to industries worldwide. Our network of more than 1,000 laboratories and offices in 100+ countries, delivers innovative and bespoke Assurance, Testing, Inspection and Certification solutions to our customers. Intertek's TQA offering, delivered with consistency, precision, pace and passion, enabling our customers to power ahead safely.

Intertek helps local and international companies to ensure their products meet quality, safety, social and environmental responsibility standards around the world.

Intertek's Environmental Lab in Mumbai is now BIS-approved for IS 17899 T:2022 and IS/ISO 17088:2021 testing.

## BIODEGRADABLE & COMPOSTABLE TESTING

### IS 17899 T:2022 & IS/ISO 17088:2021

The surge in consumer demand for sustainable goods is driving the sales of biodegradable products which are more environmentally friendly.



## THE SERVICES INCLUDE

### BIODEGRADABILITY & COMPOSTABILITY STUDIES



- Anaerobic (IS/ISO 15985, ASTM D5511, ASTM D5526)
- Aerobic (IS/ISO 14855, ASTM D5338, ASTM D5988, ISO 17556)
- Compostable (IS/ISO 17088, EN 13432, ASTM D6400, ASTM D6868)
- Marine Biodegradation (ISO 16221, ISO 19679)

### TOXICITY STUDIES



- Plant toxicity (OECD 208)
- Earthworm toxicity (OECD 207, ASTM E1676)
- Fish toxicity (OECD 203)
- Heavy Metal Analysis (IS 3025)
- Corrosion Studies

### ENVIRONMENTAL MONITORING AND LABORATORY SERVICES



- Water testing
- Soil & Sludge analysis
- Ambient Air Quality
- Indoor/ Workplace monitoring, Stack Monitoring

# ADDITIONAL TESTING SERVICES

## Packaging, Furniture, Toys, Household, Jewellery & Others

### Packaging/ Transit



- Vibration
- Drop test
- Compression Test
- Incline Impact
- Edge Crush test
- Bursting Strength
- Water vapor transmission rate
- Oxygen transmission rate
- Dart impact test
- Paper testing

### Kitchen & Cookware (Physical Test)



- Functionality test
- Salt Spray Test
- Dish washer safe test
- Hand wash safe test
- handle bending
- handle torque
- Base performance under thermal shock

### Kitchen & Cookware (Chemical Test)



- Overall migration - Short duration
- Colour migration
- Migration of heavy metals
- Migration of Phthalates
- Migration of PAHs
- BPA content
- PAA content, etc

### Household & Décor



- Resistance To Corrosion
- Resistance To Humidity
- Effects To Cold and Heat
- Effects To Extreme Temp
- Moisture Content
- Tilt / Stability Test
- Metal Hardness
- Coating Adhesion
- Drop Test
- Thermal Shock

### Furniture



- Seat durability
- Seat Impact test
- Stability
- Leg & Arm strength
- Castor Durability
- Flammability of upholstered part
- Loading capacity

### ROHS 4 (Metal)



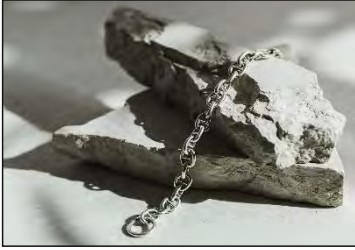
- Lead (Pb)
- Cadmium (Cd)
- Mercury (Hg)
- Chromium VI (Cr VI)



## ADDITIONAL TESTING SERVICES

### Packaging, Furniture, Toys, Household, Jewellery & Others

#### ROHS 6 + 4 phthalates (Non Metal)



- Lead (Pb)
- Cadmium (Cd)
- Mercury (Hg)
- Chromium VI (Cr VI)
- PBBs
- PBDEs
- BBP
- DBP
- DEHP
- DIBP

#### Jewellery



- Lead content
- Cadmium content
- Phthalates content
- Nickel spot
- Nickel release
- Anti-tarnishing test
- Drop test

#### Toys



- Physical & mechanical properties
- Flammability of solids
- Flammability of soft toys
- Migration of heavy metals
- Phthalates content

#### Other Chemical Tests



- Cal prop 65 compliance
- SVHC screening & analysis
- Azo dyes
- PCP content
- Formaldehyde content

## ARVIND MEHTA TECHNOLOGY & ENTREPRENEURSHIP CENTRE (AIPMA's AMTEC)



AIPMA's AMTEC, A-53, Street No. 1, MIDC Marol,  
Andheri (East), Mumbai - 400093, INDIA



+91 22 6777 8899  
+91 72089 96156



contact@amtecedu.org  
www.amtecedu.org

### CONNECT US ON



@AIPMA'sAMTEC



@AIPMA's AMTEC



@aipmas\_amtec